



*Garfield County*

# **EMERGENCY OPERATIONS PLAN**

**October 2007**

The Garfield County Emergency Operations Plan is an all-discipline, all-hazards plan that provides general guidelines and principals for managing and coordinating the overall response and recovery activities before, during and after major emergencies and disaster events that affect unincorporated areas of Garfield County. The plan's guidelines are consistent with the standards and principles of the National Incident Management System (NIMS) endorsed by the Department of Homeland Security.

Since each disaster is different in important ways, this plan recognizes that it is impossible to plan for every contingency. **Highly detailed operational plans are not included in this plan.** All-hazards disaster planning is based on the premise that all major emergencies and disaster events present similar consequences. The intent of this plan is to provide Garfield County officials with a basis for the coordinated management of disaster incidents so that impacts to people, property and public services are minimized and normal community conditions can be restored as quickly as possible.

The Garfield County Emergency Operations Plan consists of three components: (1) a basic plan, which identifies legal authorities, purpose/general concepts, planning assumptions and agency responsibilities, (2) all-hazard emergency support functions (ESFs) and (3) functional annexes.

This plan should be reviewed and updated on a continuing basis. The Garfield County Sheriff's Office Emergency Operations Office is responsible for regularly scheduled plan updates and revisions, with input from Garfield County elected officials, department heads, and the Garfield County Public Safety Council.

## BASIC PLAN

---

### LEGAL AUTHORITIES

#### Federal:

1. [Robert T. Stafford Disaster Relief and Emergency Assistance Act and Amendments \(P.L. 93-288, as amended by P.L. 100-707\).](#)
2. [The National Response Plan, December 2004.](#)
3. [Homeland Security Presidential Directive 5: Management of Domestic Incidents.](#)
4. [Homeland Security Presidential Directive 8: National Preparedness.](#)
5. [National Incident Management System \(NIMS\).](#)

#### State:

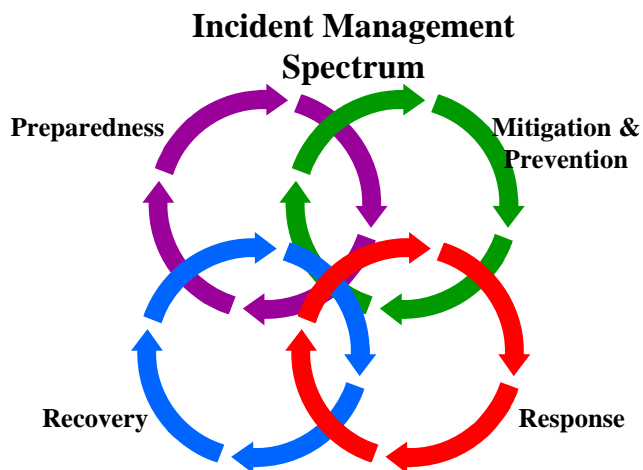
1. [Colorado Disaster Emergency Act of 1992 \(Part 21 of Article 32, Title 24, Colorado Revised Statutes, 1996 as amended\).](#)

#### Local:

1. [Garfield County Resolution No. 2007- 95 - Approving Garfield County Emergency Operations Plan and Permanently Establishing the Position of Emergency Management Coordinator.](#)

### PURPOSE

---

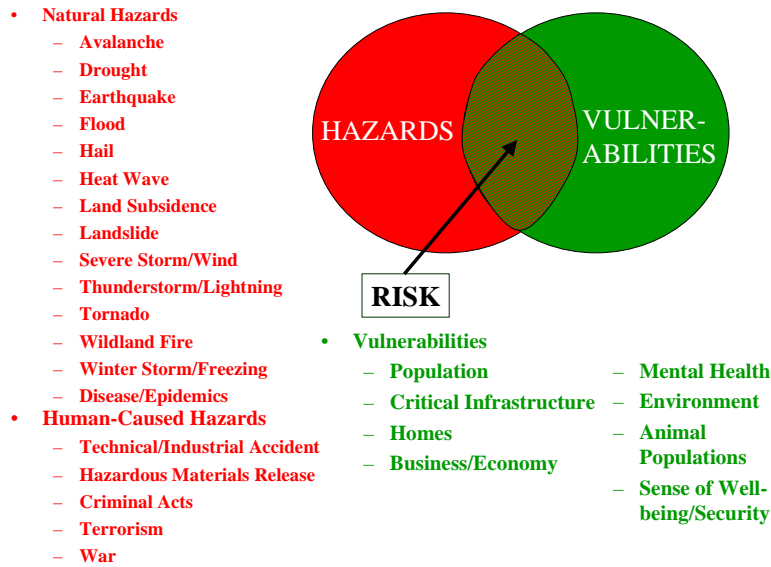


The purpose of the Garfield County Emergency Operations Plan (EOP) is to provide general guidelines and principles for managing and coordinating the overall response and recovery efforts of major emergencies and disaster events in Garfield County.

The Garfield County EOP focuses on an all hazards approach to the Preparedness, Response and Recovery activities that are directly related to an evolving incident or potential incident rather than the highly specialized

strategies required for Mitigation and Prevention activities conducted in the absence of a specific threat or hazard.

## Hazards + Vulnerability=Risk



Garfield County is subject to a wide range of natural and human caused hazards. All of these hazards present some degree of danger to our communities. Risk is the highly variable relationship between hazards and vulnerabilities. Risk that has not been reduced by prevention and mitigation must be addressed through effective preparedness, response, and recovery.

By basing this plan on a concept of all-hazards preparedness, response, and recovery, it is intended to provide a flexible, effective structure that can readily adapt to the many variables that ultimately shape much of our response and recovery effort.

### General Concepts

---

- Incidents or Disasters may:
  - Occur at any time with little or no warning in the context of a general or specific threat or hazard.
  - Require significant information sharing across multiple jurisdictions and between public and private sectors.
  - Involve multiple, high varied hazards or threats on a local, regional, or national scale.
  - Result in numerous casualties, fatalities, displaced people, property loss, disruption of normal life support systems, essential public services, basic infrastructure; and significant damage to the environment.
  - Impact critical infrastructures across sectors.
  - Overwhelm capabilities of local governments and private sector infrastructure owners and operators.
  - Attract a sizeable influx of independent, spontaneous volunteers and supplies.
  - Require prolonged, sustained incident management operations and support activities.

- Top priorities for incident management are to:
  - Save lives and protect the health and safety of the public, responders, and recovery workers.
  - Ensure security of the homeland.
  - Prevent an imminent incident, including acts of terrorism, from occurring.
  - Protect and restore critical infrastructure and key resources.
  - Conduct law enforcement investigations to resolve the incident, apprehend the perpetrators, and collect and preserve evidence for prosecution.
  - Protect property and mitigate damages and impacts to individuals, communities, and the environment.
  - Facilitate recovery of individuals, families, businesses, governments, and the environment.

## Planning Assumptions

---

The Garfield County Emergency Operations Plan is based on the following planning assumptions and considerations.

- Incidents are typically managed at the lowest possible geographic, organizational, and jurisdictional level.
- Incident management activities will be initiated and conducted using the principles contained in the National Incident Management System (NIMS).
- The combined expertise and capabilities of government at all levels, the private sector, and nongovernmental organizations (NGOs) will be required to prevent, prepare for, respond to, and recover from incidents or disasters.
- These agencies, private sector and NGOs may be required to deploy to incidents or disasters on short notice to provide timely and effective mutual aid and/or intergovernmental assistance

## Organizational Structure

---

The organizational structure addresses both site specific incident management activities and the broader county issues related to the incident, such as impacts to the rest of the county. The plan identifies immediate county or regional actions required to avert or prepare for potential subsequent events and management of multiple threats or incidents (specifically those that are non-site specific, geographically dispersed, or evolve over a long period of time).

The structure for incident management establishes a clear progression of coordination and communication from the local level to the state level. This structure is diagrammed in [Figure 1](#) on page 8.

## Incident Command Post (ICP)

---

The tactical level, on-scene incident command and management organization is located at the ICP and is responsible for directing on-scene incident management and maintaining command and control of on-scene incident operations.. It is typically comprised of designated incident management officials and responders from local agencies, as well as private sector and nongovernmental organizations.

When multiple command authorities are involved, the ICP may be led by a Unified Command, which is comprised of officials who have jurisdictional authority or functional responsibility for the incident under an appropriate law, ordinance, or agreement. In accordance with NIMS processes, resource and policy issues are addressed at the lowest organizational level practicable. If the issues cannot be resolved at that level, they are forwarded up to the next level for resolution.

The ICP is usually located at or in the immediate vicinity of the incident site. The location is selected by the agency having primary jurisdictional authority for managing the incident at this level. Generally, there is one ICP established for each incident. Depending on the number and location of incidents, there may be multiple Incident Command Posts managed by an Area Command.

## Garfield County Emergency Operations Center (EOC)

---

The support and coordination components consist of an emergency operations center (EOC) and multi-agency coordination entities. EOCs provide central locations for operational information sharing and resource coordination in support of on-scene efforts. The Garfield County EOC is presently located on the fourth floor of the County Administration Building. Remote locations for the EOC have been identified throughout the County.

## Garfield County Multi-agency Coordination Group (MACG)

---

The Garfield County MACG aids in establishing priorities among the incidents and associated resource allocations, resolving agency policy conflicts, and providing strategic guidance to support incident management activities. This group is made up of County department heads and outside agency heads with authority to make decisions and commit resources.

## Joint Information Center (JIC)

---

The Garfield County JIC serves as a focal point for the coordination and dissemination of information to the public and media concerning incident prevention, preparedness, response, recovery, and mitigation. The JIC develops, coordinates, and disseminates unified news releases. News releases are cleared through the MACG to ensure consistent messages, avoid release of conflicting information, and prevent negative impact on operations. This formal approval process ensures protection of law enforcement sensitive information. Agencies may issue their own news releases related to their policies, procedures, and capabilities; however, these should be coordinated with the JIC.

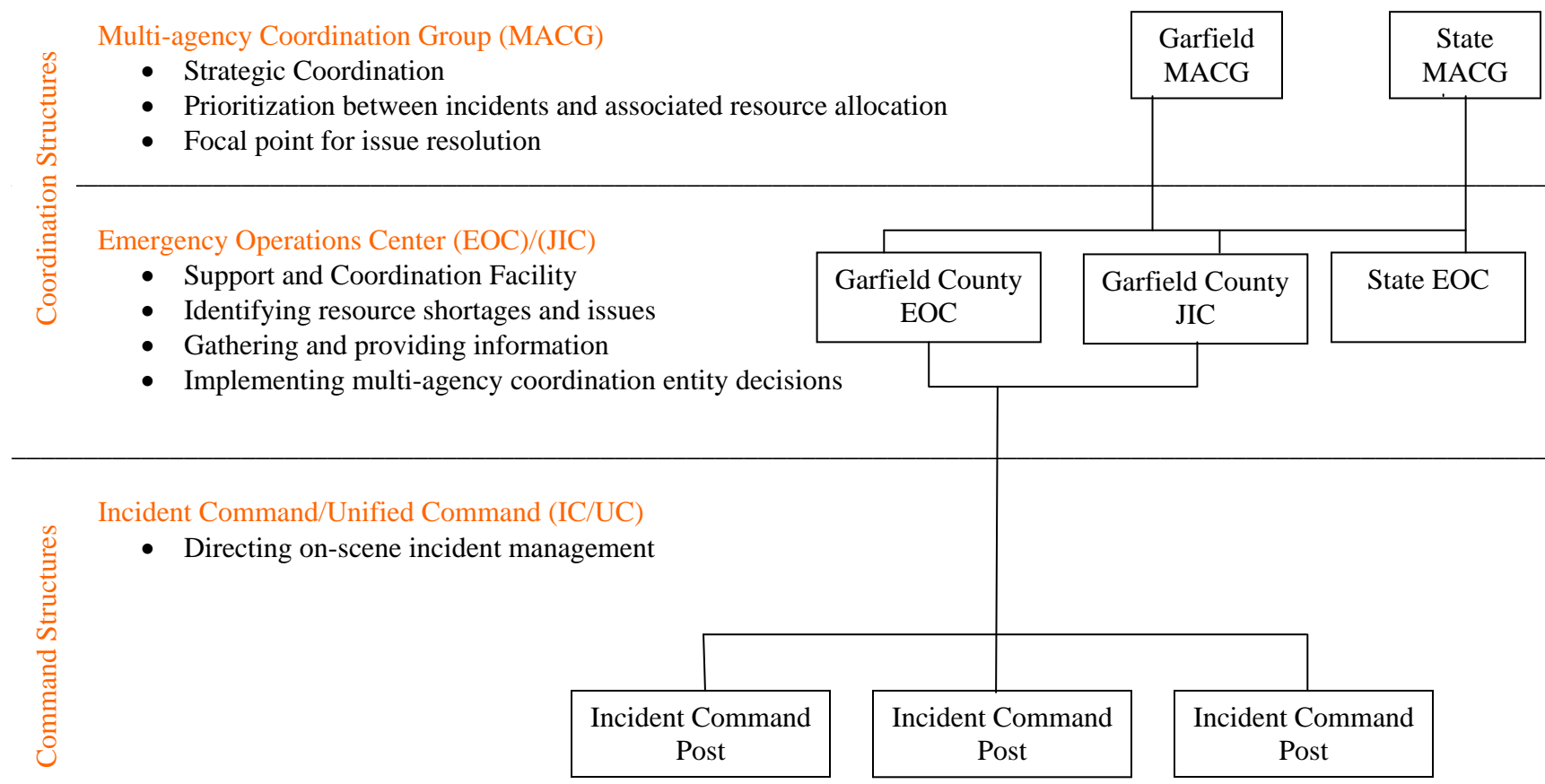
Page left blank intentionally.



Figure 1. Structure for Garfield County Emergency Operations Plan Coordination

## NIMS Framework

The structure for the Garfield County EOP coordination is based on the NIMS concept: ICS/Unified Command on-scene supported by an Area Command (if needed), Emergency Operations Center and Multi-agency Coordination Groups.



Page left blank intentionally

## **Roles and Responsibilities**

---

The designated roles and responsibilities of Garfield County Elected Officials and Department Heads are as follows:

### **Garfield County Board of County Commissioners:**

- ★ Approval and commitment of Garfield County resources, and funding for disaster and emergency response.
- ★ Formal declaration of a county emergency or disaster.
- ★ Issuance of official orders or proclamations regarding population protection or temporary social restrictions, i.e. evacuation orders, quarantine orders, establishment of curfews, etc.
- ★ Issuance of formal requests to the Governor's Office (through CDEM) for the declaration of a state emergency for the purposes of obtaining state and/or federal assistance.

### **Garfield County Administrator:**

- ★ Coordination and direction of Garfield County government activities in support of emergency or disaster relief efforts.
- ★ Issuance of directives to County departments and personnel regarding changes in normal duties/work schedules, temporary reassignments, and employment of temporary workers, as needed.
- ★ Intergovernmental liaison with other local jurisdictions.

### **Garfield County Operations Department:**

- ★ Provision of coordinated public information releases of emergency or disaster related information to news media and the public through participation with the Joint Information Center (PIO).
- ★ Procurement of emergency-related supplies and materials, and administration of vendor contracts for emergency services and equipment (Purchasing).
- ★ Damage mitigation and restoration of County owned facilities, services and utilities (Facilities).
- ★ Provide space for a temporary emergency shelter or temporary morgue (Airport).

### **Garfield County Attorney:**

- ★ Provide legal counsel and assistance to County Commissioners and to other County officials before, during, and after disaster and emergency incidents in the County.
- ★ Draft and/or review emergency contacts, memoranda of understanding and inter-governmental agreements.
- ★ Preparation of legal documents (disaster declarations, resolutions or regulations required to facilitate emergency operations).

**Garfield County Assessor:**

- ★ Contribution of personnel, records, and other resources to support damage assessment function.
- ★ Provides data to the Information Technology Department (GIS) for developing area maps.
- ★ Provides data to the Building and Planning Department to support damage assessment.

**Garfield County Coroner:**

- ★ Provision of temporary morgue and mortuary services.
- ★ Identification, verification, autopsies, and disposition of deceased persons.
- ★ Protection of personal effects of deceased persons.
- ★ Notification of relatives of deceased persons.

**Garfield County Sheriff's Office:**

- ★ Implementation of the Incident Command System, including determining the locations of Incident Command Post (ICP) and establishing necessary positions and functions (i.e. planning, finance, logistics, operations and public information).
- ★ Assessment of emergency conditions and determination of required levels of immediate assistance.
- ★ Coordinate with the Garfield County Emergency Communications Authority (Dispatch) available public warning measures.
- ★ Determination of the need for population evacuations and provision of instructions to uniformed law enforcement personnel regarding evacuation operations.
- ★ Provision of law enforcement, traffic control, and access control within the disaster area(s) and in other areas of the County.
- ★ Establishment of locations for temporary shelters in cooperation with the School Districts, the American Red Cross and local jurisdictions.
- ★ Provision of security measures at the ICP, Emergency Operations Center (EOC), temporary emergency shelters, temporary morgues, and evacuated and disaster-impacted areas, if necessary.
- ★ Act as the Designated Emergency Response Authority (DERA) for Hazardous Material incidents in unincorporated areas of Garfield County.
- ★ Establishment of measures for animal control, including the coordination of animal relief measures, the assurance of their care, and the search for their owners.
- ★ Assist shelter managers with concerns of displaced persons bringing pets to shelters.

**Garfield County Sheriff's Office Emergency Operations:**

- ★ Activation and management of the Garfield County EOC.
- ★ Coordination of resources to support the Incident Command requirements.
- ★ Coordination of mutual aid and outside assistance.
- ★ Conduct and coordinate search and rescue operations.
- ★ Provision of aviation support to include search and rescue, rapid transportation, and aerial observation.
- ★ Coordination, with the fire departments, of wildland fire suppression in unincorporated areas of Garfield County.
- ★ Activation of the Radio Amateur Civil Emergency Services (RACES) to augment EOC communications, as needed.
- ★ Emergency situation assessment and recommendations to the County Commissioners and the Sheriff concerning the need for local disaster declarations, evacuation orders, etc.
- ★ Providing situation reports and damage assessment reports for the County Commissioners and the Sheriff.
- ★ Establishment of communications with CDEM in order to provide situation reports and forwarding requests for state assistance.
- ★ Plan maintenance, training and exercises.

**Garfield County Building and Planning Department:**

- ★ Provision of personnel for structure and facility inspections to determine safety of individual structures (commercial, residential and public) and to identify needed repairs/implementation of condemnation procedures.
- ★ Participation in long-term disaster recovery and hazard mitigation planning to ensure the compatibility of redevelopment plans and hazard mitigation measures with the comprehensive county land use plan and other relevant plans.

**Garfield County Finance Department:**

- ★ Resource tracking, record keeping and documentation for disaster-related costs and financial commitments.

**Garfield County Road and Bridge Department:**

- ★ Removal of debris, clearance of public right-of-ways, and planning for street/road recovery operations, with priority assigned to critical emergency services access.
- ★ Provision of personnel and heavy equipment in support of search and rescue operations.
- ★ Provision of personnel, equipment, supplies and materials for flood control and flood hazard mitigation measures.
- ★ Restoration of damaged county roads and bridges and other related infrastructure.
- ★ Provision of transportation services in support of emergency response and recovery efforts (movement of county personnel, equipment and supplies).
- ★ Provision of fuel and vehicle support.

**Garfield County Human Services Department:**

- ★ Assist the American Red Cross, Salvation Army and other volunteer organizations in the provision of emergency shelters, temporary housing and other assistance to displaced citizens.
- ★ Assist in coordination with the Volunteer Organizations Active in Disasters (VOAD), in the overall efforts of volunteer organizations and other volunteers.
- ★ Provision of resources, in coordination with Colorado West Mental Health, for stress counseling/crisis counseling for disaster victims and disaster relief workers.
- ★ Assist the Colorado Division of Housing and local housing services provide housing assistance and other emergency housing services to disaster victims.
- ★ Provide 24/7 response and on-call service to assist with critical child and adult protection situations.

**Garfield County Public Health Nurse**

- ★ Coordination of outside health resources providing assistance to Garfield County, in cooperation with EMS agencies.
- ★ Assistance to EOC staff in assessing overall health and medical resource needs during response and recovery operations and maintenance of situation status information within the EOC.
- ★ Provision of environmental health services and technical support, including the identification of health hazards, sources of contamination, or unsanitary conditions that present health hazards to the general public.
- ★ Conduct and lead disease or health related outbreak investigations.
- ★ Coordination with the JIC in providing environmental and health risk communications to the media and county citizens.

**Garfield County Clerk and Recorder**

- ★ Issuance of legal permits/documents, i.e. burial permits, death certificates, etc.
- ★ Repository for all recorded official county documents and files.

## **Additional Available Resources**

---

### **Non-governmental Organizations**

---

Nongovernmental organizations (NGOs) collaborate with first responders, governments at all levels, and other agencies and organizations providing relief services to sustain life, reduce physical and emotional distress, and promote recovery of disaster victims when assistance is not available from other sources.

The National Voluntary Organizations Active in Disaster (NVOAD) is a consortium of more than 30 recognized national organizations of volunteers who are active in disaster relief. Such entities provide significant capabilities to incident management and response efforts at all levels.

The private sector coordinates with the government sector to effectively share information, form courses of action, and incorporate available resources to prevent, prepare for, respond to, and recover from incidents or disasters.

Certain organizations are required by existing law and regulation to bear the cost of planning and response to incidents, regardless of cause. In the case of an incident or disaster, these private-sector organizations are expected to mobilize and employ the resources necessary and available in accordance with their plans to address the consequences of incidents at their own facilities or incidents for which they are otherwise responsible.

Local government should maintain ongoing interaction with the critical infrastructure and key resources industries to provide coordination for prevention, preparedness, response, and recovery activities. When practical, or when required under Federal law, private-sector representatives should be included in planning and exercises. The government may, in some cases, direct private-sector response resources when they have contractual relationships, using government funds.

### **Citizen Involvement**

---

Strong partnerships with citizen groups and organizations can provide support for incident management prevention, preparedness, response, recovery, and mitigation. The U.S. Citizen Corps brings these groups together and focuses efforts of individuals through education, training, and volunteer service to help make communities safer, stronger, and better prepared to address the threats of terrorism, crime, public health issues, and disasters of all kinds.

## **Emergency Support Functions (ESF)**

---

The Garfield County Emergency Operations Plan applies an all-hazards functional approach that groups the capabilities of local departments and agencies into Emergency Support Functions (ESF) to provide the planning, support, resources, program implementation, and emergency services that are most likely to be needed during incidents or disasters. The response to actual or potential incidents/disasters is typically provided through a full or partial activation of the ESF structure as necessary.

Each ESF is composed of primary and support agencies. The Garfield County Emergency Operations Plan identifies primary agencies on the basis of authorities, resources, and capabilities. Support agencies are assigned based on resources and capabilities in a given functional area.

The resources provided by the ESFs reflect the resource kind and type categories identified in the National Incident Management System (NIMS). The scope of each ESF is summarized in [Figure 2](#) (page 16). ESFs are expected to support one another in carrying out their respective roles and responsibilities.



FIGURE 2. Emergency Support Functions

ESF	Scope
<a href="#"><u>ESF #1 – Transportation</u></a>	Civil transportation support Restoration/recovery of transportation infrastructure Movement restrictions Damage and impact assessment
<a href="#"><u>ESF #2 – Communications</u></a>	Coordination with telecommunications industry Restoration/repair of telecommunications infrastructure Protection, restoration, and sustainment of info. Resources
<a href="#"><u>ESF #3 – Public Works and Engineering</u></a>	Infrastructure protection and emergency repair Infrastructure restoration Engineering services, construction management Critical infrastructure liaison
<a href="#"><u>ESF #4 – Firefighting</u></a>	Firefighting activities Resource support
<a href="#"><u>ESF #5 – Emergency Management</u></a>	Coordination of incident management efforts Management of Emergency Operations Center (EOC)
<a href="#"><u>ESF #6 – Mass Care, Housing, and Human Svcs.</u></a>	Mass Care Disaster housing Human Services Sheltering
<a href="#"><u>ESF #7 – Resource Support</u></a>	Resource support (facility space, office equipment and supplies, contracting services, etc.) Financial Management
<a href="#"><u>ESF #8 – Public Health and Medical Svcs.</u></a>	Public Health Medical (EMS and Hospitals) Mortuary services Mental Health
<a href="#"><u>ESF #9 – Search and Rescue</u></a>	Life-saving assistance
<a href="#"><u>ESF #10 – Hazardous Materials Response</u></a>	Hazardous materials response (CBRNE) Environmental safety and short-and long-term cleanup
<a href="#"><u>ESF #11 – Agriculture</u></a>	Nutrition Assistance Animal and plant disease/pest response Food safety and security
<a href="#"><u>ESF #12 – Energy &amp; Public Utilities</u></a>	Energy infrastructure assessment, repair, and restoration Energy industry utilities coordination Energy forecast
<a href="#"><u>ESF #13 – Public Safety and Security</u></a>	Warnings – Notifications – Evacuations Facility and resource security Security planning and technical and resource assistance Public safety/security support Support to access, traffic, and crowd control Law Enforcement
<a href="#"><u>ESF #14 – Long Term Community Recovery And Mitigation</u></a>	Social and economic community impact assessment Long-term community recovery assistance to local governments, and the private sector Mitigation analysis and program implementation
<a href="#"><u>ESF #15 – External Affairs</u></a>	Emergency public information and protective action guidance Media and community relations Support to on scene incident management

## ESF Roles and Responsibilities

---

### Primary Agencies

---

A local agency designated as an ESF primary agency serves as a local executive representative to accomplish the ESF mission. When an ESF is activated, the primary agency is responsible for:

- Orchestrating local support within their functional area for an affected jurisdiction
- Provide staff for the operations functions at fixed and field facilities
- Notifying and requesting assistance from support agencies
- Managing mission assignments and coordinating with support agencies,
- Working with appropriate private-sector organizations to maximize use of all available resources
- Supporting and keeping other ESF and organizational elements informed of ESF operational priorities and activities
- Executing contracts and procuring goods and services as needed
- Ensuring financial and property accountability for ESF activities
- Planning for short-term and long-term incident management and recovery operations
- Maintaining trained personnel to support interagency emergency response and support teams

## Support Agencies

---

When an ESF is activated in response to an incident, support agencies are responsible for:

- Conducting operations, when requested by the designated ESF primary agency, using their own authorities, subject-matter experts, capabilities, or resources.
- Participation in planning for short-term and long-term incident management and recovery operations and the development of supporting operational plans, SOPs, checklists, or other job aids, in concert with existing first responder standards.
- Assisting in the conduct of situational assessments.
- Furnishing available personnel, equipment, or other resource support as requested by the ESF primary agency.
- Participation in training and exercises aimed at continuous improvement of prevention, response, and recovery capabilities.
- Identifying new equipment or capabilities required to prevent or respond to new or emerging threats and hazards, or to improve the ability to address existing threats.
- Providing information or intelligence regarding the agency's area of expertise.

## PRIMARY AND SUPPORT DESIGNATIONS

### Designation of Garfield County Primary and Support agencies

Emergency Support Functions (ESF)															
Dept./Agency	<u>#1 Transportation</u>	<u>#2 Communications</u>	<u>#3 Public Works &amp; Engineering</u>	<u>#4 Firefighting</u>	<u>#5 Emergency Management</u>	<u>#6 Mass Care, Housing, Human</u>	<u>#7 Resource Support</u>	<u>#8 Public Health and Medical</u>	<u>#9 Search and Rescue</u>	<u>#10 Haz Mat Response</u>	<u>#11 Agriculture</u>	<u>#12 Energy and Public Utilities</u>	<u>#13 Public Safety &amp; Security</u>	<u>#14 Community Recovery &amp;</u>	<u>#15 External Affairs</u>
BOCC	S	S	S	S	S	S	S	S	S	S	S	S	S	P	P
County Administration	S	S	S	S	S	S	S	S	S	S	S	S	S	S	S
Assessor							S							S	S
County Attorney					S		S						S	S	S
Emergency Management	P	S	S	S	P	P	P	S	S	U	S	U	S	S	S
Sheriff	S			U	S		S		P	U	S	S	P	S	S
Bldg & Planning			S		S		S						S	S	S
Public Health/Environment					S		S	P			S		S	S	S
Coroner					S		S	S					S	S	S
Public Relations	S	S	S	S	S	S	S	S	S	S	S	S	S	S	S
Information Systems		U			S		S						S	S	S
Finance					S		S							S	S
Human Services					S	S	S						S	S	S
Road & Bridge			U		S		S					S	S	S	S
County Engineer			U		S		S					S		S	S
Human Resources					S		S							S	
RACES		S			S		S							S	
Co. West Mental Health					S	S	S							S	
Red Cross	S				S	S	S						S	S	
RFTA	S				S		S							S	
VOAD	S				S	S	S						S	S	
Public Utilities					S		S					U		S	
Local, State and Federal Agencies	S	S	S	S	S	S	S	S	S	S	S	S	S	S	S
Hospitals					S		S	S						S	
Garfield County Emer Comm Center	S	U	S	S	S	S	S	S	S	S	S	S	S	S	S
Private Sector Resources			S	S	S		S		S	S	S	S		S	S
School Districts	S				S	S	S							S	
Extension Office					S		S				P			S	
Fire Districts				U	S		S	S	S	U			S	S	S

P = ESF Primary Agency

U = ESF Unified Agency

S = ESF Support Agency

Note: Unless a specific component of a department or agency is the Primary Agency, it is not listed in this chart. Refer to the ESF Annexes for detailed support by each of these departments and agencies.

## Emergency Support Function 1 – Transportation

---

Definition: Provides for coordination, control and allocation of transportation assets in support of the movement of emergency resources including the evacuation of people, and the redistribution of food and fuel supplies.

Activation Process: The Garfield County Emergency Manager will activate this ESF to meet known or anticipated transportation needs during disaster response and recovery operations.

Lead Agency: Emergency Management.

Supporting Agencies: BOCC, Sheriff, Motor Pool, Landfill, Public Relations, RFTA, School Districts, Red Cross, VOAD, Local, State and Federal Agencies.

Roles and Responsibilities: Notify, order, track and document transportation resources used in support of emergency and disaster response and recovery operations. Coordinate with other ESFs as needed.

## Emergency Support Function 2 – Communications

---

Definition: Provides communications, IT support and data products to response and recovery efforts of first responders and county agencies. Provides emergency warning information and guidance to the public. Facilitates the requirements and resources needed to provide for backup capability for all means of communication.

Activation Process: The Garfield County Emergency Communications Center Director will activate this ESF for communications services. The Information Systems Director will activate this ESF to meet known or anticipated information technology services, GIS services and computer support needs during disaster response and recovery operations.

Lead Agency: Garfield County Emergency Communications Center and Information Systems Department.

Supporting Agencies: BOCC, Emergency Management, Radio Amateur Civil Emergency Services (RACES), Local, State, and Federal Agencies.

Roles and Responsibilities: Coordinates and supports telecommunications requirements during an emergency and disaster response and recovery operations. The Garfield County Communications Center has authority to activate two separate warning systems; the Emergency Preparedness Network (EPN) or the Emergency Alert System (EAS) to effectively notify and warn citizens. Incident communication actions are consistent with the template established in the National Incident Management System (NIMS). Coordinate with other ESFs as needed.

### Emergency Support Function 3 – Public Works and Engineering

---

Definition: Evaluate, maintain and restore public roads, bridges and drainage. Support private sector access in support of the restoration of critical private infrastructure (i.e., electrical, gas, communications and water lines). Debris Management: Provide for debris clearance, roads, highways and bridge repairs, engineering, construction, repair and restoration of essential public works systems and services, and the safety inspection of damaged buildings.

Activation Process: The Road and Bridge Director will activate this ESF to meet known or anticipated needs for public works and engineering support during disaster response and recovery operations.

Lead Agency: Road and Bridge Department and County Engineer.

Supporting Agencies: BOCC, County Engineer, Emergency Manager, Local Public Works Departments, Colorado Department of Transportation (CDOT), and other State and Federal Agencies.

Roles and Responsibilities: Provide public works and engineering expertise, staff, equipment and materials in support of emergency and disaster response and recovery operations. Coordinate with other ESFs as needed.

### Emergency Support Function 4 – Firefighting

---

Definition: Provides for fire fighting resource mobilization and deployment; leads in coordinating all resources to combat urban and wild land incidents; provides incident management teams to assist on-scene incident command and control operations.

Activation Process: The Garfield County Sheriff's Office will activate this ESF thru coordination with the 7 independent fire districts, and the state and federal fire agencies within the county, to meet known or anticipated fire fighting needs during disaster response and recovery operations.

Lead Agency: The Garfield County Sheriff's Office. This is shared with the 7 independent fire districts and the state and federal fire agencies within the county. The Sheriff's Office will coordinate the assumption of lead agency responsibilities as indicated by the specific event.

Supporting Agencies: BOCC, Garfield County Fire Districts, and state and federal fire agencies.

Roles and Responsibilities: Support wild land field operations through a close coordination with local, state and federal fire agencies. Coordinate fire fighting resources in support of emergency and disaster response and recovery operations that may not be directly fire related. Coordinate with other ESFs as needed.

## Emergency Support Function 5 – Emergency Management

---

Definition: Provides for the overall management and coordination of the county's emergency operations in support of local response agencies and jurisdictions. Activates the County Emergency Operations Centers as needed. Collects, analyzes, and disseminates critical information on emergency operations for decision making purposes. Identifies the roles and responsibilities of county government in coordinating mutual aid, state and federal assistance.

Activation Process: The Garfield County Emergency Manager will activate this ESF to meet known or anticipated emergency management needs during disaster response and recovery operations.

Lead Agency: Emergency Management.

Supporting Agencies: BOCC, Sheriff's Office and all other county agencies and departments, local, state, federal and private sector resources.

Roles and Responsibilities: Serves as support for all local departments and agencies across the spectrum of incident management from prevention to response and recovery. Facilitates information flow in the pre-incident prevention phase in order to place assets on alert or to pre-position assets for quick response. Provides the informational link between the County EOC and the State EOC. Maintains the ability through mutual aid requests to provide surge capacity to perform essential emergency management functions on short notice and for varied duration. Coordinates participation of departments and agencies in the incident action planning process.

## Emergency Support Function 6 – Mass Care, Housing, and Human Services

---

Definition: Manages and coordinates sheltering, feeding, first aid, and special human needs, to include critical child and adult protection situations, for disaster victims. This assistance may continue well after the emergency phase of the response. Will assist in the coordination and management of volunteer resources.

Activation Process: The Garfield County Emergency Manager, in concert with Garfield County Department of Human Services, the Red Cross and VOAD, will activate this ESF to meet known or anticipated mass care needs during disaster response and recovery operations.

Lead Agency: Emergency Management.

Supporting Agencies: BOCC, Department of Human Services, Red Cross, VOAD, School Districts, local, state, federal and public sector resources.

Roles and Responsibilities: Provide mass care resources used in support of emergency and disaster response and recovery operations. Coordinate with other ESFs as needed.

## Emergency Support Function 7 – Resource Support

---

Definition: The effective coordination of all resources used in support of emergency and disaster response and recovery operations.

Activation Process: The Garfield County Emergency Manager will activate this ESF to meet known or anticipated resource needs during disaster response and recovery operations.

Lead Agency: Emergency Management.

Supporting Agencies: BOCC and all other County agencies and departments, local, state, federal and private sector resources.

Roles and Responsibilities: Secures resources through mutual aid agreements, volunteer organizations, and procurement procedures for all ESFs as needed. Provides for coordination and documentation of personnel, equipment, supplies, facilities, and services used during disaster response and initial relief and recovery operations. Support effective reception and integration of augmentation resources. Coordinates with other ESFs as needed.

## Emergency Support Function 8 – Public Health and Medical Services

---

Definition: Provides on-scene triage, first aid, life support, and transportation of the injured. Coordinates with local hospitals to ensure timely and appropriate delivery of injured to primary care facilities. Initiates Mass Casualty response as appropriate.

Public Health and Environment: Mobilizes trained health and medical personnel and other emergency medical supplies, materials and facilities. Provides public health and environmental sanitation services, disease and vector control.

Activation Process: The Garfield County Public Health Nurse, in concert with local EMS providers and hospitals, will activate this ESF to meet known or anticipated public health and medical service needs during disaster response and recovery operations.

Lead Agency: Garfield County Public Health Director.

Supporting Agencies: BOCC, Garfield County Fire Districts, West Care Ambulance, Valley View Hospital, Grand River Medical Center, Coroner.

Roles and Responsibilities: Provide timely triage, treatment and transportation of the injured in coordination with EMS agencies and private sector hospitals. Mobilizes regional, statewide and/or federal health and medical resources. Coordinates with other ESFs as needed.



## Emergency Support Function #8(a) – Mental Health

---

Definition: Provides for an efficient, coordinated, effective response to the mental health needs of those affected by a disaster in Garfield County.

Activation Process: Human Services will activate this ESF to meet known or anticipated Mental Health needs during disaster response and recovery operations.

Lead Agency: Human Services Director.

Supporting Agencies: BOCC, Colorado West Mental Health, other contracted mental health provider resources and state and federal agencies.

Roles and Responsibilities: Provides for the needs of victims, families, rescue personnel, and others in the community to assist them in the immediate aftermath of a disaster. Coordinates with other ESF areas as needed.

## Emergency Support Function 9 – Search & Rescue

---

Definition: Provides resources for ground, water, and airborne activities to locate, identify, and remove persons lost or trapped from a stricken area. Provides for specialized emergencies and rescue operations.

Activation Process: The Garfield County Sheriff's Office will activate this ESF to request regional, state or federal SAR/USAR resource needs during disaster response and recovery operations.

Lead Agency: Garfield County Sheriff's Office.

Supporting Agencies: BOCC, Garfield County Fire Districts, state and federal agencies.

Roles and Responsibilities: Coordinate the timely request, reception, and integration of state and federal SAR/USAR resources used in support of emergency and disaster response and recovery operations. Coordinate with other ESFs as needed.

## Emergency Support Function 10 – Hazardous Materials Response and Recovery

---

Definition: Provides for response, identification, containment and cleanup of hazardous material accidents or releases.

Activation Process: The Garfield County Emergency Manager will activate this ESF to meet known or anticipated hazardous materials needs during disaster response and recovery operations.

Lead Agency: Emergency Management, in concert with the Garfield County Sheriff's Office and the Garfield County Multi-Agency Hazardous Material Response Team.

Supporting Agencies: BOCC, Garfield County Sheriff's Office, Garfield County Fire Districts, state and federal agencies.

Roles and Responsibilities: Coordinates the ordering, tracking and documentation of local, state and federal hazardous materials resources used in support of emergency and disaster response and recovery operations. Coordinate with other ESFs as needed.

## Emergency Support Function 11 – Agriculture and Natural Resources

---

Definition: Provides for the implementation of a coordinated State and local response to devastating animal/zoonotic disease and pest outbreaks. Ensures that animal, veterinary, and wildlife issues are supported in the event of a disaster.

Activation Process: The Garfield County Extension Office will activate this ESF to meet known or anticipated agricultural and natural resource needs during disaster response and recovery operations.

Lead Agency: Garfield County Extension Office.

Supporting Agencies: BOCC, Animal Control (Sheriff's Office), Public Health Nurse, local, state, federal agencies, and private sector resources. Coordinate with other ESFs as needed.

Roles and Responsibilities: Coordinates the ordering, tracking, and documentation of local, state, and federal agricultural resources used in support of emergency and disaster response and recovery operations. Determines nutrition assistance needs, obtaining and distributing appropriate food supplies, and authorizing disaster food stamps. Provides for animal, plant disease, and pest response. Assures that animal, veterinary, and wildlife issues in disasters are supported. Ensures that the commercial food supply is safe and secure. Coordinate with other ESFs as needed.

## Emergency Support Function 12 – Energy and Public Utilities

---

Definition: Provides for the rapid restoration of emergency and governmental services, roads, bridges and publicly held critical facilities. Supports the restoration of private sector critical infrastructure. Coordinates the rationing and distribution of emergency power and fuel.

Activation Process: The Garfield County Emergency Manager will activate this ESF thru coordination with the private sector, to meet known or anticipated energy needs during disaster response and recovery operations.

Lead Agency: Emergency Management.

Supporting Agencies: BOCC, Sheriff's Office, Road and Bridge, Engineering, local, state and federal agencies and private sector resources.

Roles and Responsibilities: The restoration of public services is primarily the responsibility of the private sector. This restoration requires close coordination with local, state and federal agencies. The energy restoration process includes projected schedules, percent completion of restoration, geographic information on the restoration and other information as appropriate. Coordinate with other ESFs as needed.

## Emergency Support Function 13 – Public Safety & Security

---

Definition: Provides for the protection of life and property by enforcing laws, orders and regulations.

Activation Process: The Garfield County Sheriff's Office will activate this ESF to meet known or anticipated public safety/security needs during disaster response and recovery operations.

Lead Agency: Garfield County Sheriff's Office.

Supporting Agencies: BOCC, Coroner, Road and Bridge, District Attorney, Red Cross, VOAD, local, state, and federal agencies.

Roles and Responsibilities: Provides security, traffic and access control to ensure the expedient access of response resources and the evacuation or sheltering in place of at risk populations. Provides investigative resources in the event of a criminal action.

## Emergency Support Function 14 – Long Term Community Recovery/Mitigation

---

Definition: Determine and identify responsibilities for recovery activities and provide effective community recovery efforts. Ensure that procedures and experts are available to provide preliminary estimates and descriptions.

Activation Process: The Garfield County Emergency Manager, in concert with the Board of County Commissioners will activate this ESF to meet known or anticipated recovery/mitigation needs during disaster response and recovery operations.

Lead Agency: Board of County Commissioners.

Supporting Agencies: Emergency Management, Road and Bridge, Engineering, Building and Planning, local, state and federal agencies.

Roles and Responsibilities: Provide for a systematic damage assessment process that will help to ensure timely recovery assistance, as well as maximizing state and federal financial disaster assistance in state and Presidential declared disasters.

## Emergency Support Function 15 – External Affairs

---

Definition: Provides the resources and structure for the implementation of the Garfield County Emergency Operations Plan. This is accomplished through the leadership of the Board of County Commissioners and all elected officials. Includes public information, disaster declaration and funding authority.

Activation Process: This Garfield County Emergency Manager will activate this ESF to meet known or anticipated external affairs needs during disaster response and recovery operations.

Lead Agency: Board of County Commissioners

Supporting Agencies: Emergency Management, Public Information Officer, all elected County officials, all County department heads, local, state and federal agencies and private sector resources.

Roles and Responsibilities: The BOCC declares county emergencies and disasters and authorizes requests for state and federal assistance. The BOCC retains fiscal authority for all county agencies and is accountable for community public health and safety. The Public Information Officer provides effective collection, control and dissemination of information to inform the general public of emergency conditions and available assistance.